

intuVision's Samsung camera OPEN platform applications provide intelligent video analytics directly in your surveillance camera without the need for additional hardware for analytics processing.

intuVision Samsung camera embedded analytics include:

Activity 

Enter/Exit  (People Counting)

Line Crossing 

Object Taken

Speed

Wrong Way 

Zone Intrusion 

: with **Person Classification** option

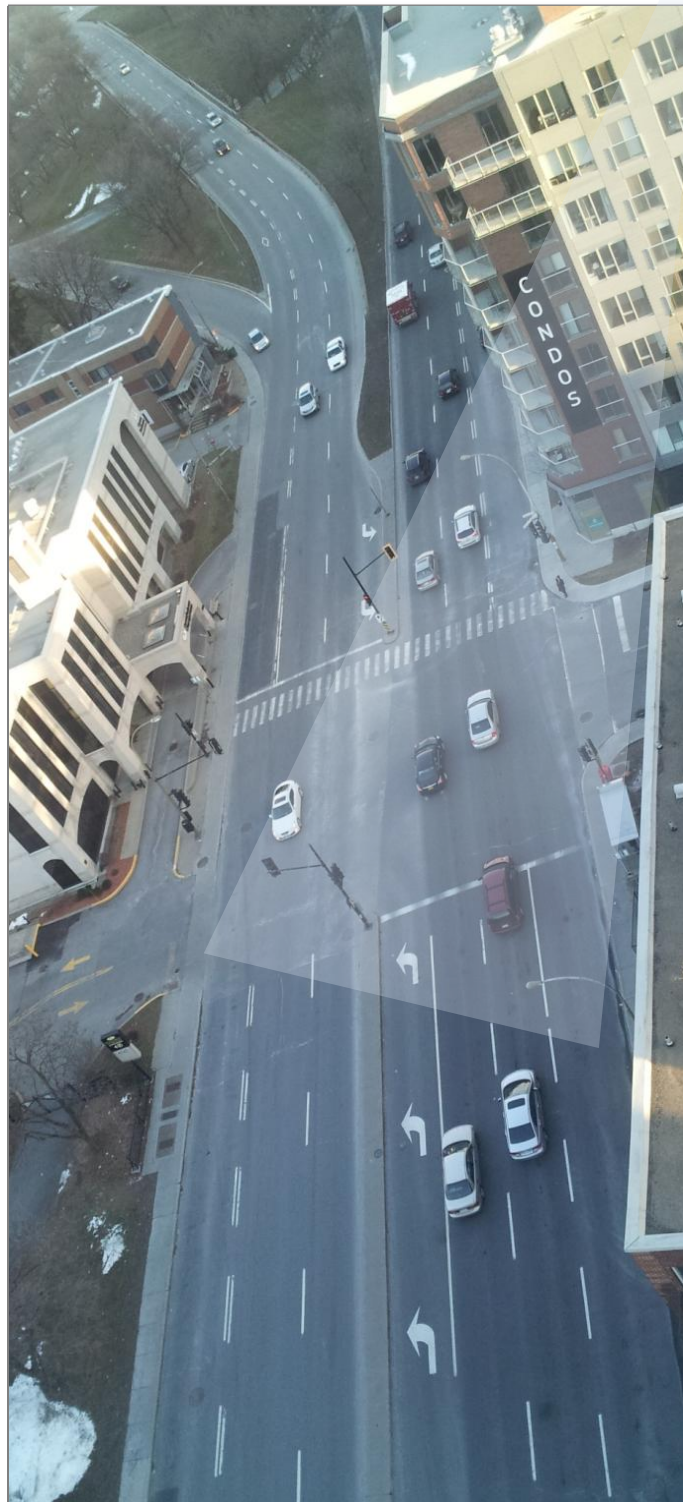
Unique person classification option in relevant analytics makes it possible to alarm only when people trigger the alarm conditions.

Object tracking parameters and the analytics rules are easily setup and optimized via a web user interface.

Particular event conditions such as a person entering into the user-marked zone or a vehicle exceeding the set speed limit generate alarms.

When alarm conditions are detected a notification email is sent to user selected email addresses and the alarm frame image can be uploaded. Please refer to the Samsung camera user guide for details about supported actions, integrated devices and configurations.

All intuVision camera applications are suitable for indoors and outdoors views from mounted fixed cameras and scenes with light to medium foot or vehicle traffic.



Camera Application Descriptions and Features

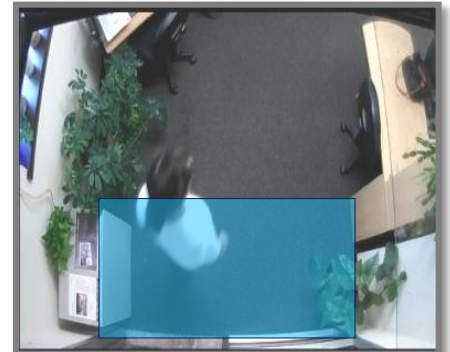
Activity

Detects moving objects in the entire scene or within a user-drawn zone. An exclusion zone can be used to discard parts of the scene from detection.



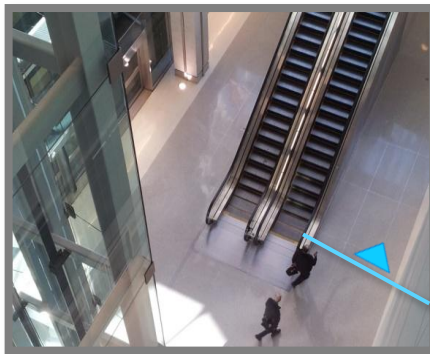
Enter/Exit

Detects objects entering or exiting the view from a marked zone. Generally used for counting people entry and exits in overhead views.



Line Crossing

Detects objects passing across a user-drawn line. The crossing direction is specified as left-to-right, top-to-bottom or both-ways.



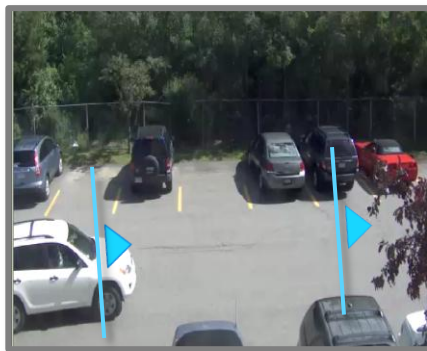
Object Taken

Detects a marked object being removed from its location. Object Taken is used to protect valuable assets such as art, wall-monitors, TV's.



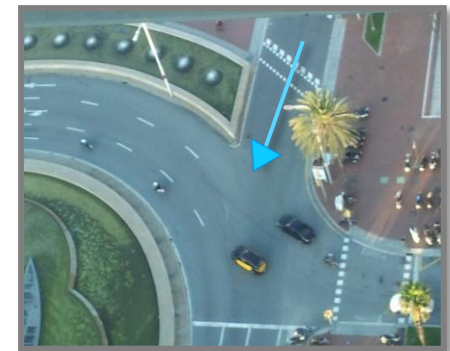
Speed

Detects vehicles exceeding the set speed limit based on the travel time between to user drawn line markers.



Wrong Way

Detects objects moving in the direction of the user drawn arrow. Applicable for both people and vehicle motion.



Zone Intrusion

Detects objects entering into a user-drawn zone. With person classification can be used to monitor people intrusions.



Person Classification Option

A basic person classification capability is provided with the intuVision analytics. Where applicable, each detected object is evaluated as person/non-person for alarm decisions.

Event Metadata

intuVision analytic event XML metadata including relevant object information is available to host applications through a client socket connection.

Camera Application Technical Specifications

Compatible Cameras, Integrated Devices and Systems

Supported Samsung Camera Models

SNB5004	All analytics are applicable.
SNB6004	All analytics are applicable.
SNB7004	All analytics are applicable.

Compatible VMS's for event triggers on detection of alarm conditions and event management.

Configuration and Settings

Flexible configuration via web interface, requires Windows and IE.
Language: English.

Object Detection Settings

Sensitivity (*percent detection sensitivity*)
Minimum Object Size (*height and width in pixels*)
Minimum Object Age (*in view in seconds*)
Minimum distance moved (*by an object in pixels*)

Event Settings

Time Interval (*between events in seconds*)
Exclusion Zone (*from event detection, for Activity*)
Multiple Line segments, Line-Crossing direction (*right, left, top, bottom, bi-directional*)
Multiple Asset Zones (*ObjectTaken*)
Minimum Removal Time (*an object is taken away in seconds, for ObjectTaken*)

View Specifications

Camera view angles 90-45 degrees
Top view: 90 -70 degrees
Side view: 45-69 degrees
Field-of-view range: 10ft.- 150ft. for people, 50ft.- 250ft. for vehicles (distances should be validated upon installation)

Application Limitations

Camera Applications are not recommended for use in very busy areas. Weather conditions such as rain and snow may degrade the detection accuracy. Scene lighting limitations are dependent on the camera used, please refer to the specific Samsung camera user guide for more details.

