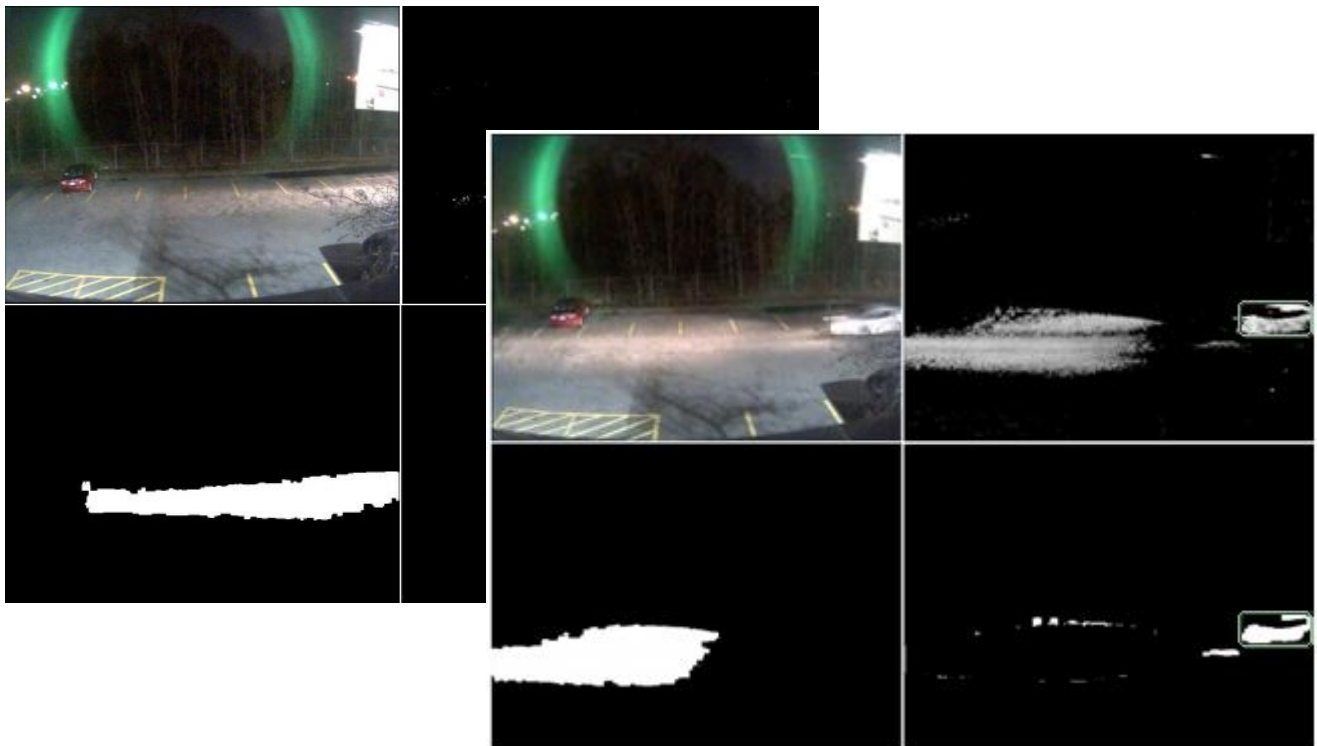


New Feature Spotlight: Vehicle Headlight Glare Removal

At night, the headlights of a vehicle can flood the camera view with bright light interfering with the object detection and tracking:

- The light beam from the headlights of a passing vehicle can illuminate sections of the scene causing false triggers even when the vehicle is not in the camera view
- The light can reflect off of the surfaces in the scene causing false object detections
- The headlight beam may get detected as part of the object resulting in inflated size detections and multiple objects to merge together

intuVision now provides an intelligent headlight glare removal option that mitigates such issues. The images below demonstrate the headlight glare removal in action.



Top left image shows a camera view that has been illuminated by the headlight of an approaching vehicle. The pixels illuminated by the headlight beam get a high probability of belonging to the foreground based on the learnt background model. intuVision's new headlight glare removal algorithm correctly identifies these as the headlight and filters them out. Later the vehicle enters the camera view (top right). As can be seen in the images the vehicle gets correctly detected as a foreground object while the pixels illuminated by the headlight get removed from the final processed image.

For more information about our products, please visit our website at www.intuvisiontech.com, email us at sales@intuvisiontech.com or call us at 781-497-1015.