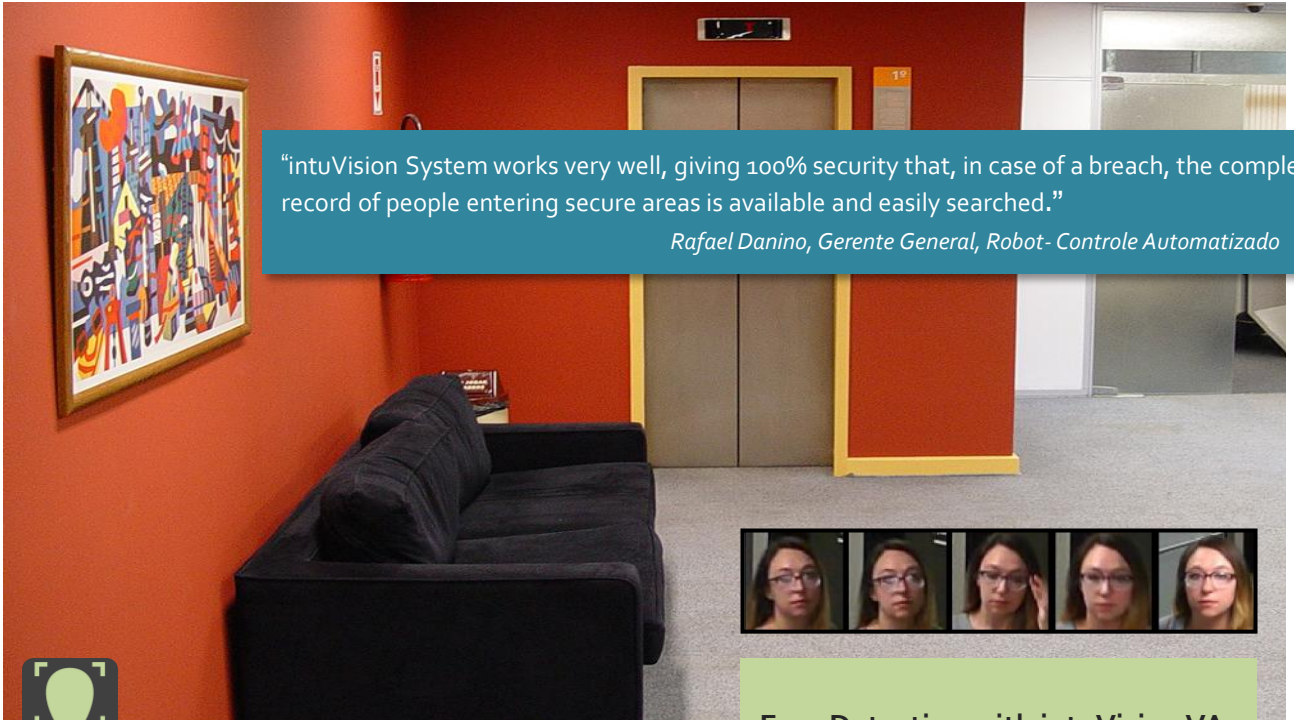


intuVision & Robot Control User Story:

Detecting and Matching Faces in a Secure Facility



“intuVision System works very well, giving 100% security that, in case of a breach, the complete record of people entering secure areas is available and easily searched.”

Rafael Danino, Gerente General, Robot- Controle Automatizado



This Central American government facility required a robust, yet simple, solution to track and search employees entering secure areas of the facility in case of a breach. Since they wanted to use existing surveillance cameras for both security and face detection, standard face recognition systems did not work on their camera views. Looking for a different approach they came to intuVision. With robust integration into Exacq, intuVision VA Face solution was set up easily, resulting in a quick and efficient deployment.

About the Customer Central American government facility with 15 secure access areas.

Equipment-at-a-Glance

Hardware: 15 exacqVision Z-Series NVRs, 15 IP cameras

Software: exacqVision Professional VMS, intuVision VA Face version 7.0

Face Detection with intuVision VA

intuVision VA Face detection with flexible camera placement provides a complete, searchable catalogue of faces captured while people are entering /walking around a facility. Information from employee enrollment tags can be used for enrolled faces with employee name and number for easy tracking of people.

Benefits

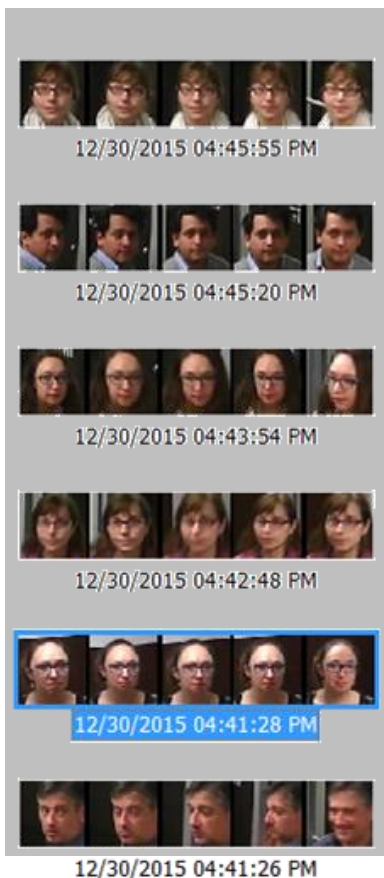
- All-in-one solution for video surveillance and Face Detection
- Face catalogue view for quick glancing
- Matching of detected faces to previously enrolled ones
- Quicker reaction to security breaches
- Savings in personnel time and software/hardware costs



intuVision User Story: Face Detection

"intuVision's integration with exacqVision allowed us to easily select the cameras for face detection, and get the system running quickly. Enrollment across cameras decreased setup time, we got good results with minimum effort."

Rafael Danino, Gerente General,
Robot- Controle Automatizado



Deployment Details

This secure facility uses powerful intuVision video analytics to collect a catalogue of people's faces entering secure facilities in case of a security breach. The installed system comprises of intuVision Video Analytics Face module integrated with exacqVision network video recorder in the facility and cameras monitoring building entrances, the lobby and the stairwell areas. Seamless integration between intuVision and exacqVision VMS software made adding analytics to an already mature security system simple.

The customer did not want to implement card readers or other access control devices, since it would be a more expensive solution, and interfere with employees normal flow. With the existing unobtrusive security cameras, similar levels of security could be implemented without inconvenience to employees.

intuVision VA Face Detection is very flexible compared to other face detection solutions on the market, good results were obtained with existing cameras, without requiring changes to camera location or mounting of additional cameras.

intuVision Face Detection Catalogue is easily searchable for specific date, time, and camera view. Additionally, by tagging enrolled faces with employee name and identification number allows security staff to quickly and efficiently respond to security breaches.